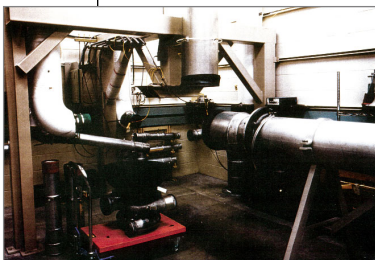
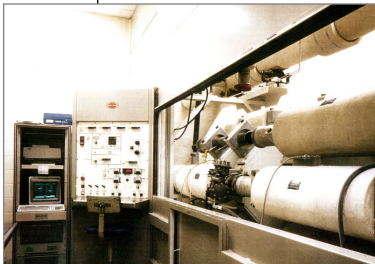


DELTA



"The design and construction work at Delta's Technical Operations Center is often of a highly complex nature that requires intelligent problem solving and unique answers. MOMA Architecture specified and managed a complicated roof replacement project that included a comprehensive evaluation and recommendation of preferred systems, use of low-odor materials, drainage corrections and asbestos abatement. The project was successful and the finished product exceeded our expectations. MOMA has worked on several projects of this nature for Delta and has always shown the ability necessary to solve our unique problems".

*L. Matthew Gwinn
Senior Project Manager
Delta Air Lines*

Since 1995, MOMA Architecture has provided design services to Delta's technical operations centers located at Hartsfield International Airport and Dallas/Fort Worth Airport. The diversity of project types includes office build-outs, medical facilities, equipment test facilities, parts repair shops, equipment mezzanines, customer service facilities, re-roofing projects and restroom renovations.

This variety of project types requires hands-on, knowledgeable and responsive design professionals who can quickly mobilize to complete "mission critical" projects. The complex nature of this work requires extraordinary attention to detail and extensive coordination with engineers and specialty consultants. All projects must be designed to allow for construction without interruption to ongoing operations.

Over the years, Delta Air Lines has worked diligently to grow an airline around a culture of quality. MOMA is honored to be a part of a select group of professionals who are called upon for design services. Schedule your next flight via the following link: www.delta.com